

Corrigendum

Corrigendum to: Fluid control of localized mineral domains
in limestone pressure solution structures
[Journal of Structural Geology 28 (2006), 284–301][☆]

Mark A. Evans^a, R. Douglas Elmore^b

^a Department of Physics and Earth Science, Central Connecticut State University, New Britain, CT 06050, USA

^b School of Geology and Geophysics, University of Oklahoma, Norman, OK 73019, USA

Available online 31 March 2006

The authors wish to apologise that sample locations in Fig. 10 were incorrectly positioned. A corrected Fig. 10 is printed here for clarity.

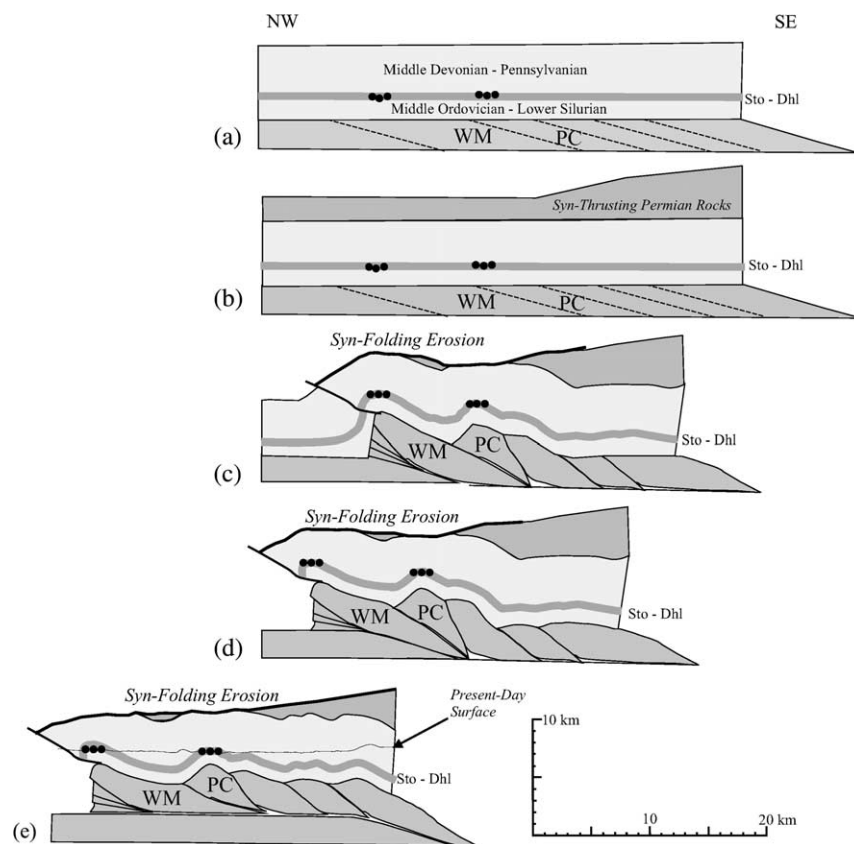


Fig. 10. Sequence of burial and deformation for the Wills Mountain anticline (WM) and Patterson Creek anticline (PC) in northern West Virginia. Based on burial and fluid history derived by Evans and Battles (1999), Evans and Hobbs (2003), and unpublished data. Sections (a), (c), and (e) correspond to points A, B, and C, respectively, on the burial plot in Fig. 8. Locations of samples used in this study are schematically shown by small filled circles.

[☆]DOI of original article: 10.1016/j.jsg.2005.10.004